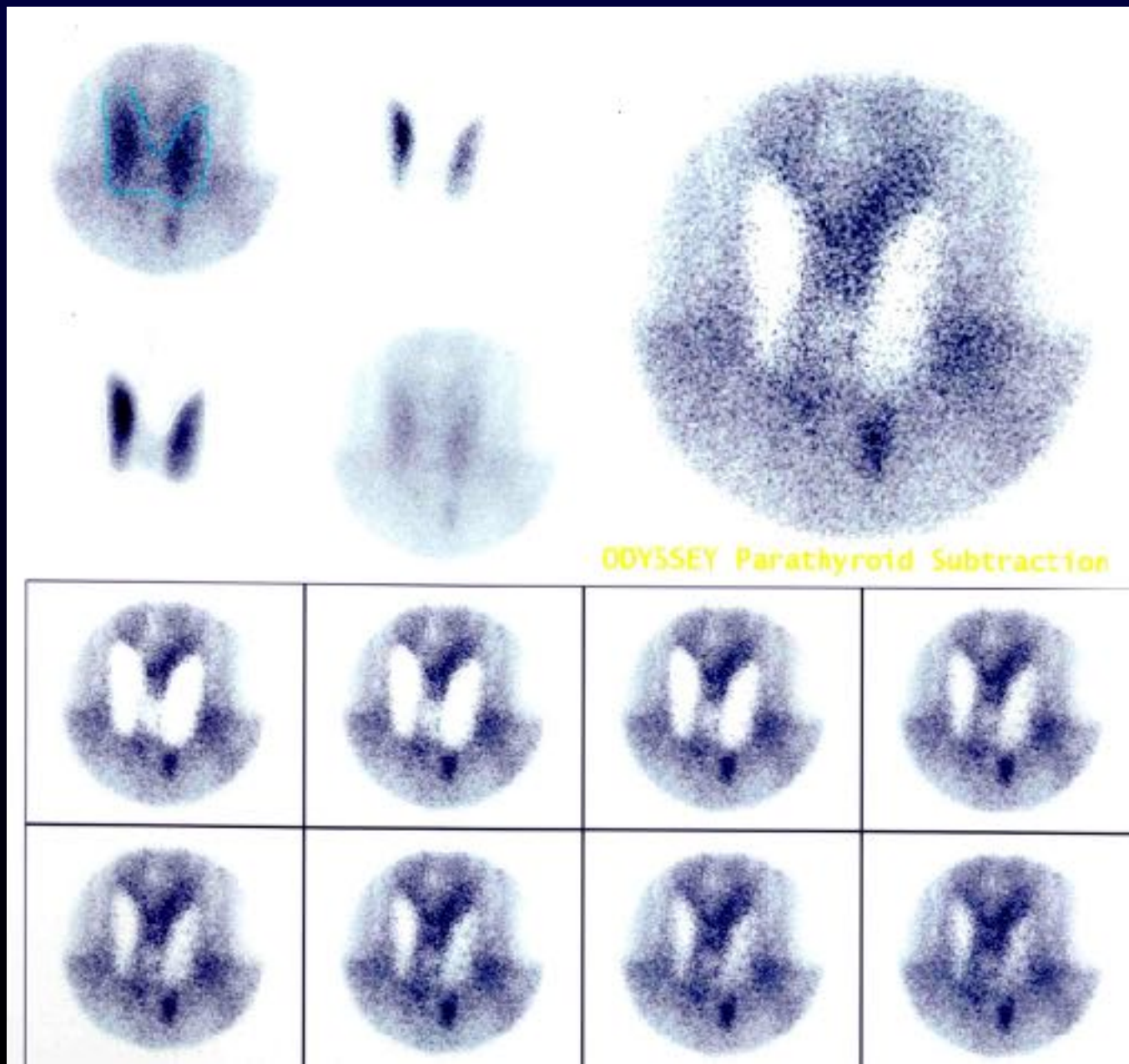


MIBI-Tc soustrait

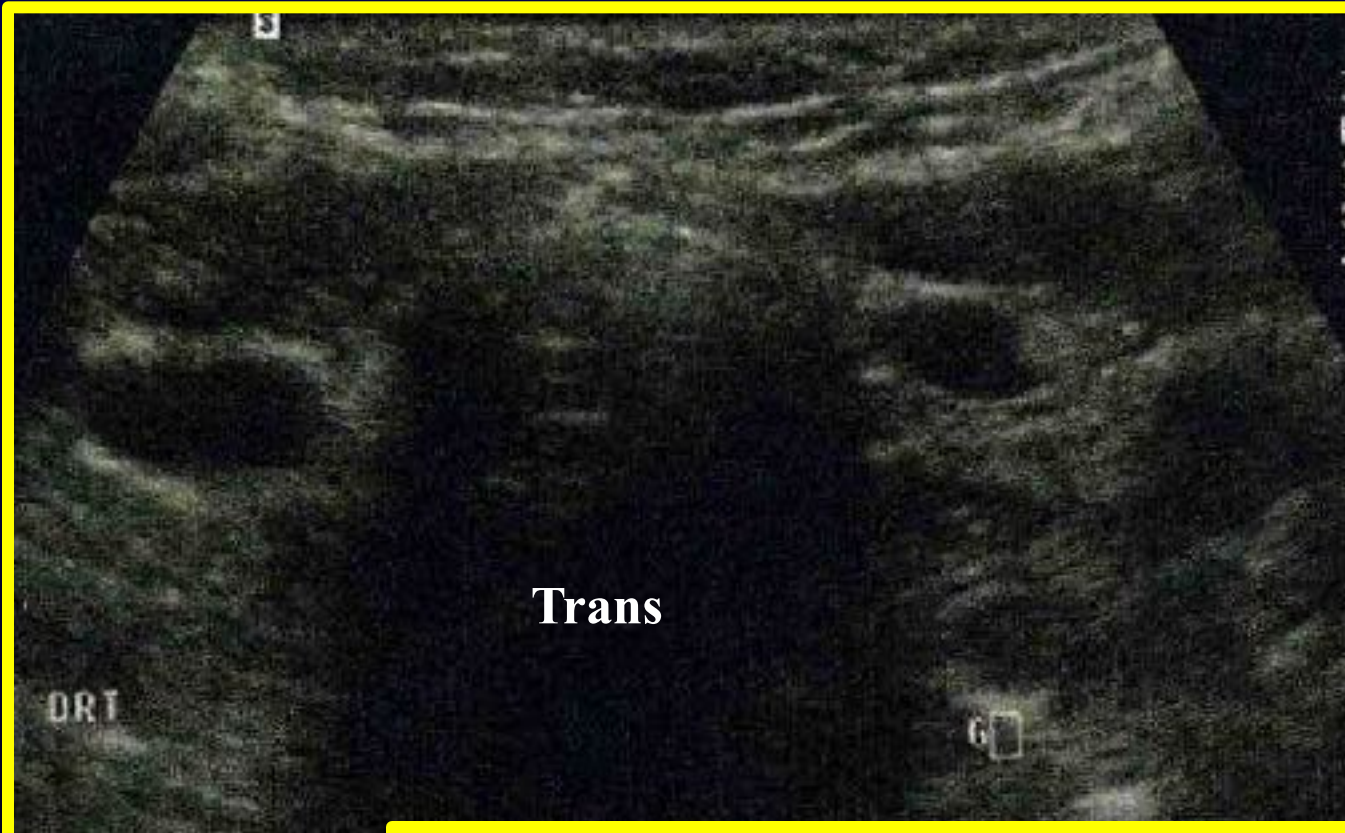
3h00

HYPER  
PARATHYROÏDIE  
PRIMAIRE

Inf Gauche  
sous la thyroïde



**2 Lésions en**  
**échographie**



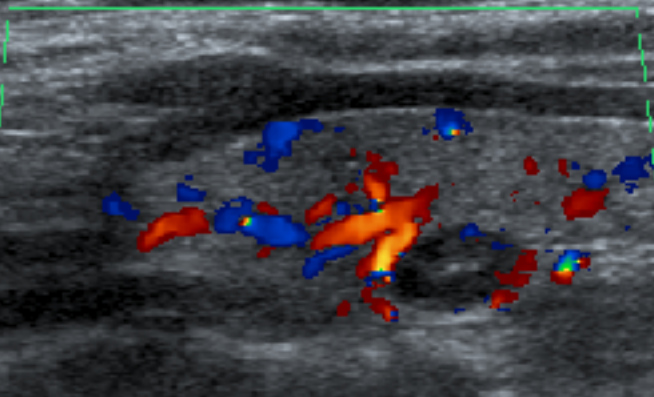
CONDUITE A TENIR  
?



AUTRE PATIENT

HYPER  
PARATHYROÏDIE  
PRIMAIRE

Dt

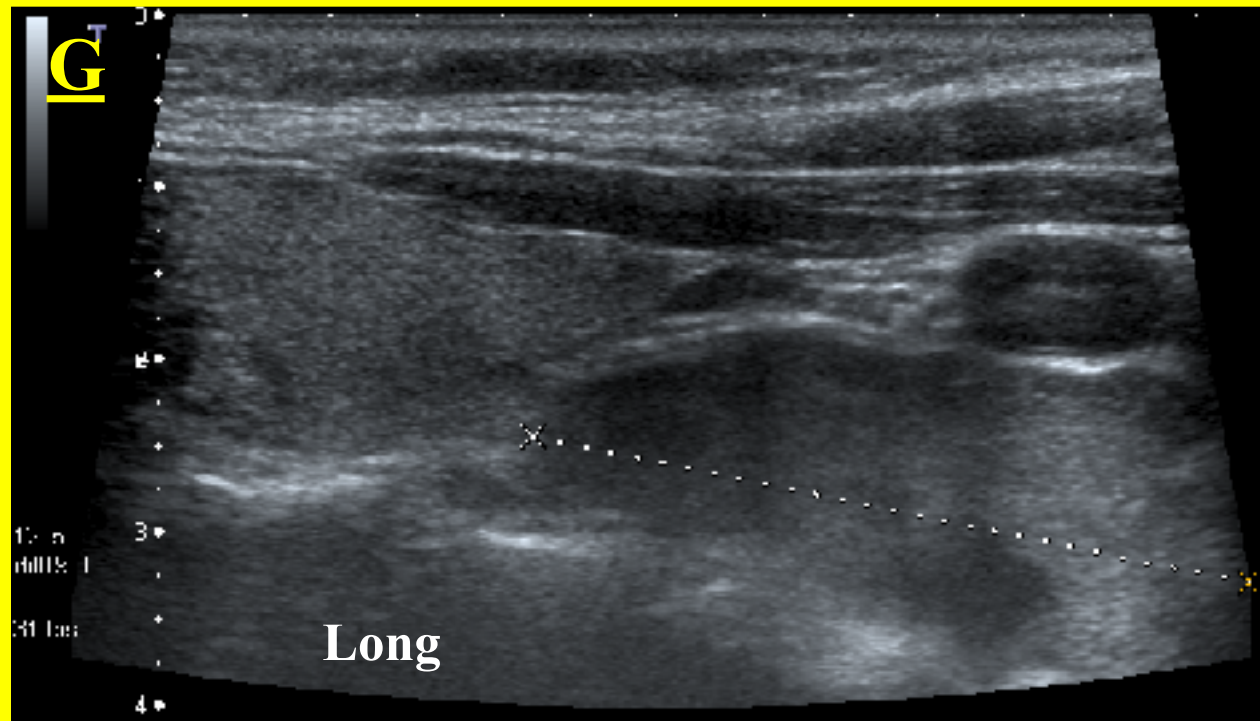


Long

MIBI:  
Fixation Importante  
INF Gauche

CONDUITE A TENIR  
?

G



Long

Volume: 4.8 cm<sup>3</sup> Dist1: 16.0 mm Dist2: 13.6 mm Dist3: 42.1 mm