

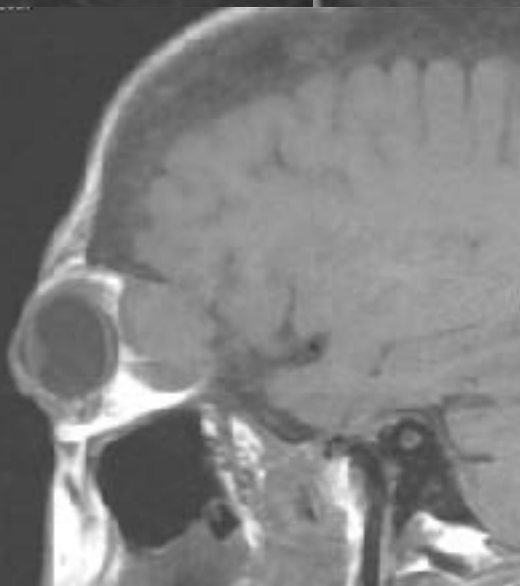
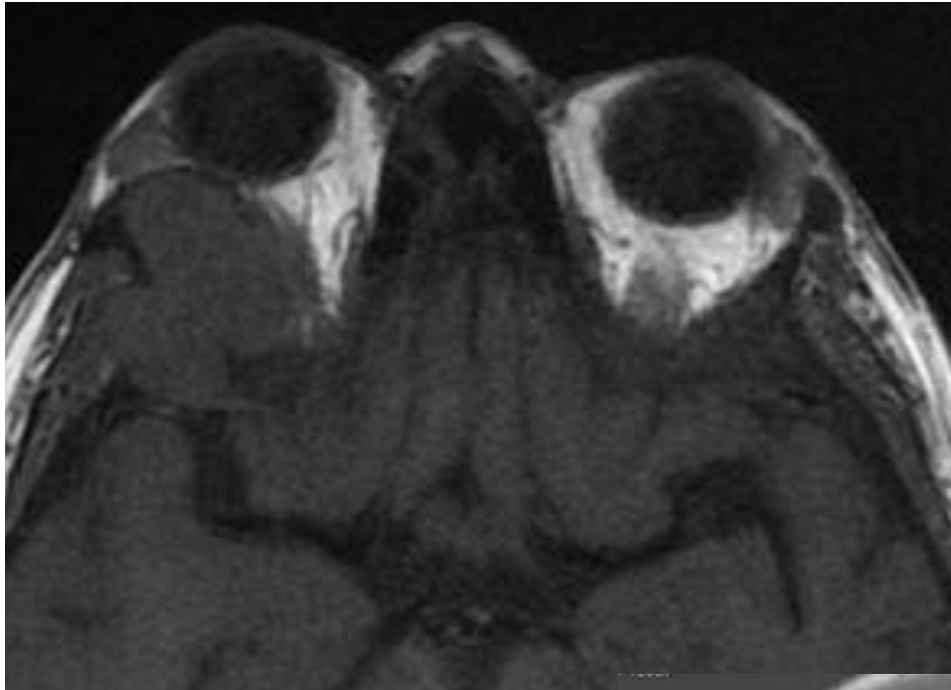
Quiz case

M Tassart, S Périé,

Hôpital Tenon, APHP, Paris
UPMC

Patient de 21A, arrivée en France Mai 2016, IR terminale.
Hémodialysée depuis 5 ans

Bilan d'exophtalmie





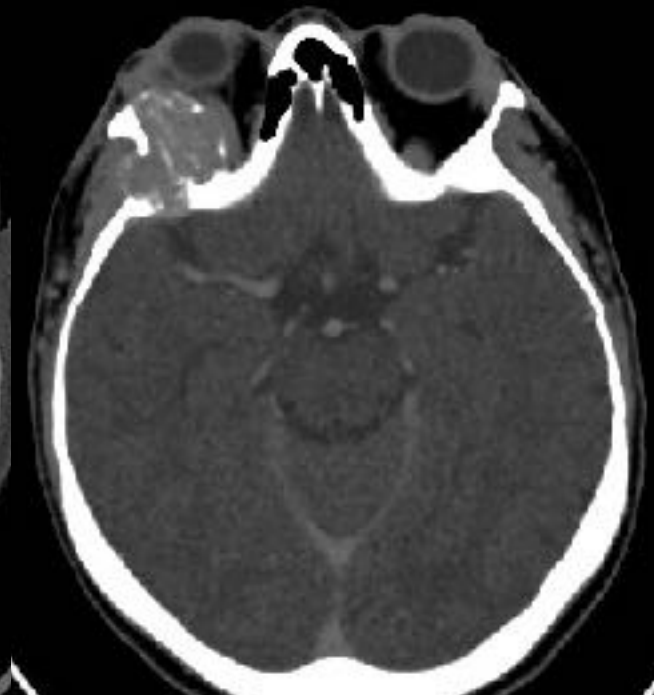
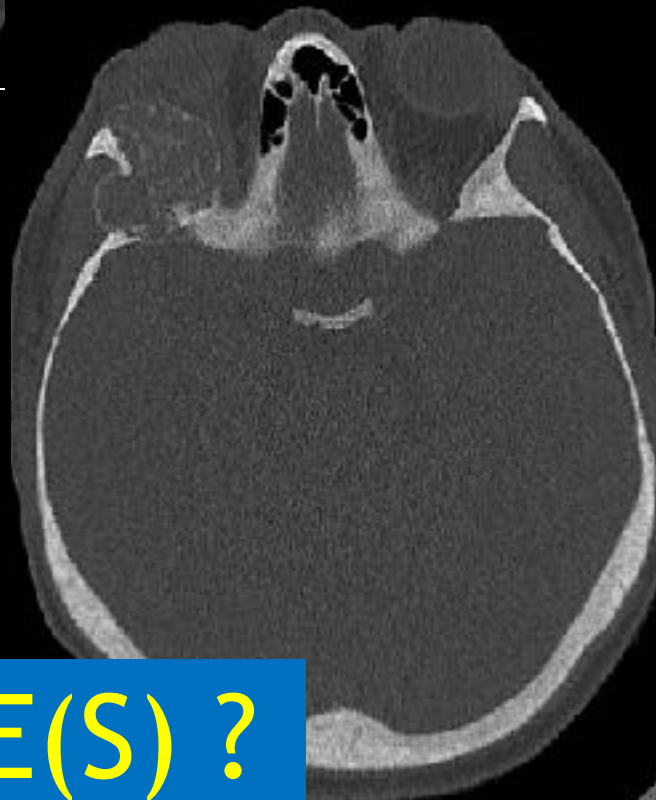
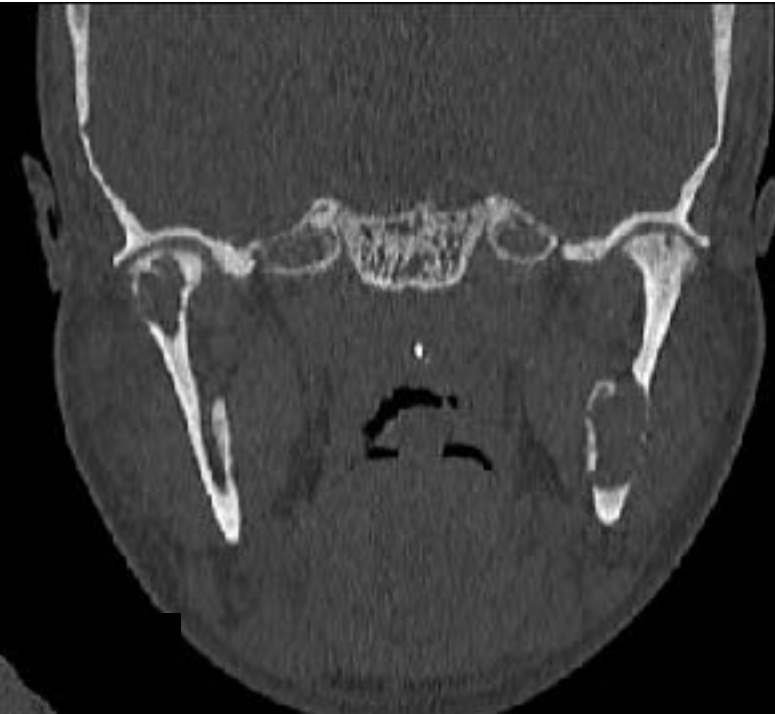


RADIO
Systématique

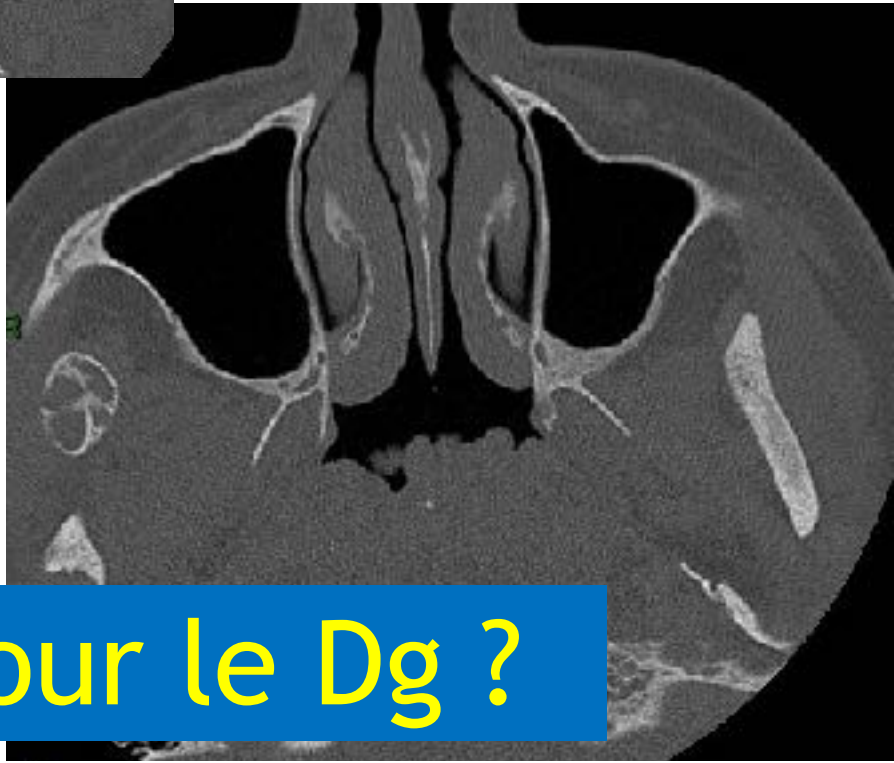
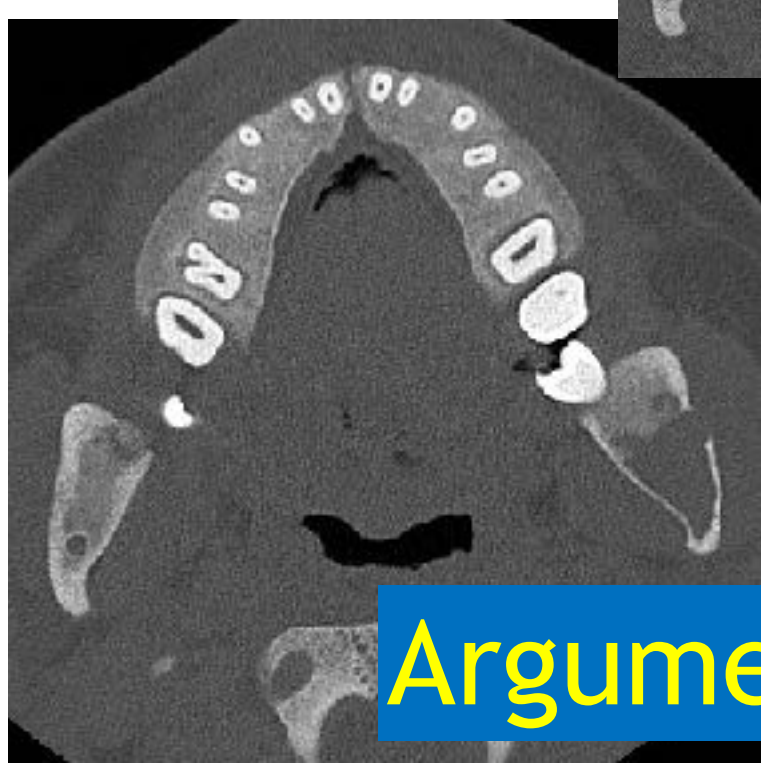
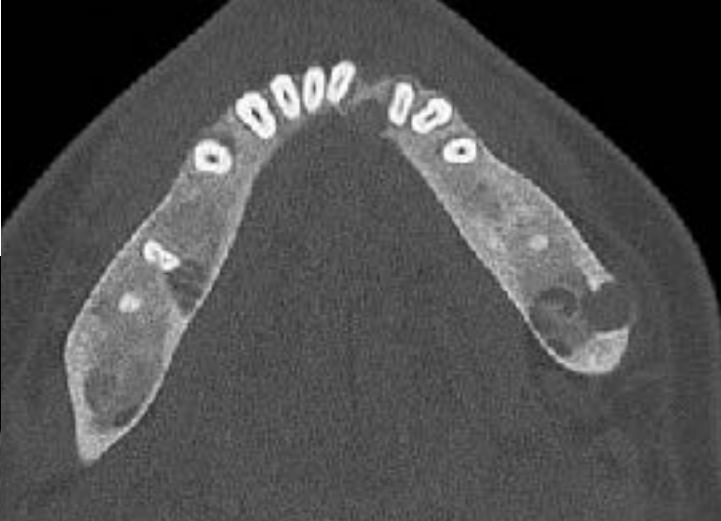
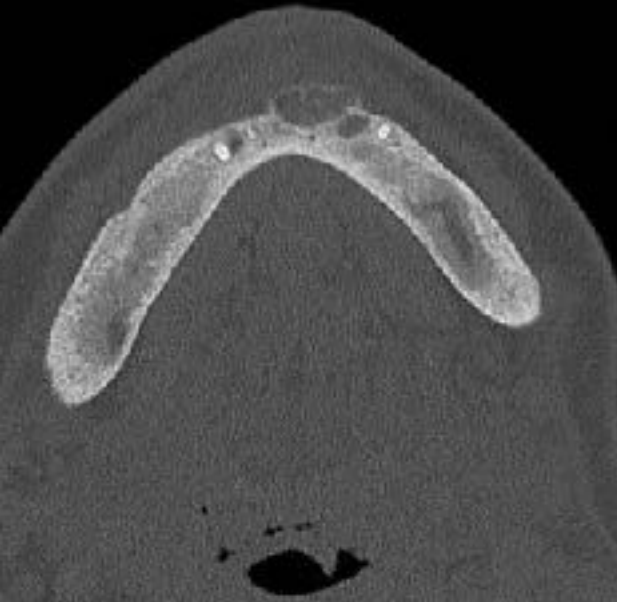
Il y a 3 mois

Quel bilan
biologique
?

Quels examens
?



HYPOTHESE(S) ?



Argument pour le Dg ?